

ErbB2 pAb

Catalog Number: 21200

Gene Symbol: ERBB2/HER2/Neu/c-Neu

Description: Anti-ERBB2 Rabbit polyclonal Antibody

Background: The HER-2/neu oncogene, a member of the epidermal growth factor receptor or erb-B gene-like family, encodes a transmembrane tyrosine kinase receptor that mediates extracellular signals activated by epidermal growth factors. Her2 abnormal has been strongly associated with many malignant tumors, especially with breast cancers. The expression level of Her2 is an important criteria in clinic evaluating of the progression of breast cancer.

Immunogen: A synthetic peptide from the internal region of ERBB2, human origin.

Tested applications: ELISA, WB, IHC

Recommended dilutions:

ELISA: 1:1000-1:5000

WB: 1:100-1:1000

IHC: 1:50-1:100

Concentration: 0.1 mg/ml

Host: Rabbit

Clonality: Polyclonal

Purity: Purified from serum

Format: Liquid

Storage buffer:

Preservative: no

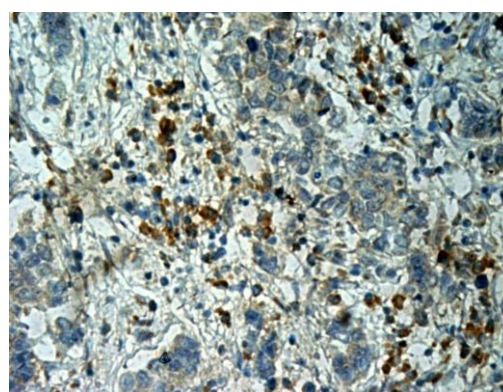
Constituents: PBS (without Mg²⁺ and Ca²⁺), pH

7.4, 150 mM NaCl, 50% glycerol

Species Reactivity: Anti-EYA2 antibody recognizes EYA2 of vertebrates.

Storage Conditions: Store at -20°C. Avoid freeze / thaw cycles

Immunohistochemistry:



Immunohistochemical analysis of paraffin-embedded human liver cancer tissue with anti-Erb-B2 polyclonal antibody (Cat. #21200). Tissue samples were fixed with formaldehyde and blocked with 1% serum for 15 min at 37 °C. Antigen retrieval was by heat mediation in citrate buffer (pH6). Samples were then incubated with primary antibody (1:50 dilution) overnight at 4°C. A HRP-conjugated Goat anti-mouse IgG (1:50 dilution) was used as secondary antibody.

For research use only. Not for diagnostic or therapeutic applications.

24 Whitewoods Lane, Malvern, PA 19355

E-mail: sale@neweastbio.com

Tel: (610) 945-2007 FAX: (610) 945-2008

Web: www.neweastbio.com